

GENERAL NOTES:

1. ALL FASTENERS SHALL BE IN ACCORDANCE WITH THESE DRAWINGS. SPECIFIED ANCHOR EMBED TO BASE MATERIAL SHALL BE BEYOND WALL FINISH OR STUCCO.
 2. OPENINGS, BUCKING & BUCKING FASTENERS MUST BE PROPERLY DESIGNED & INSTALLED TO TRANSFER WIND LOADS TO THE STRUCTURE.
 3. THESE NON-IMPACT RATED PRODUCT INSTALLATIONS ARE IN ACCORDANCE WITH AND MEET THE REQUIREMENTS OF THE FLORIDA BUILDING CODE (FBC).
 4. ALL ANCHORS SECURING PRODUCT FRAMES TO PRESSURE TREATED BUCKS OR WOOD FRAMING SHALL BE CAPABLE OF RESISTING CORROSION CAUSED BY THE PRESSURE TREATING CHEMICALS IN THE WOOD.
 5. MATERIALS, INCLUDING BUT NOT LIMITED TO STEEL SCREWS, THAT COME INTO CONTACT WITH OTHER DISSIMILAR MATERIALS SHALL MEET THE REQUIREMENTS OF FLORIDA BUILDING CODE CHAPTER 20.
 6. TO THE BEST OF OUR KNOWLEDGE, THE PRODUCT SHOWN HEREIN IS CERTIFIED & QUALITY ASSURED BY A FLORIDA STATE APPROVED CERTIFICATION/QA ENTITY & SHALL BE LABELED IN ACCORDANCE WITH THE FBC AND THE FLORIDA DEPARTMENT OF BUSINESS & PROFESSIONAL REGULATION SPECIFICATIONS. PRODUCT ASSEMBLY IS NOT PART OF THIS DRAWING AND SHALL BE IN ACCORDANCE WITH THE MANUFACTURER'S QUALITY ASSURANCE SPECIFICATIONS & TESTING REPORTS.
 7. CERTIFICATION OF THESE PRODUCT INSTALLATIONS SHALL BE CONSIDERED VOID IF ANY OF THE FOLLOWING APPLY: 1) PRODUCT IS INSTALLED WITHOUT A BUILDING PERMIT FROM THE APPLICABLE LOCAL BUILDING DEPARTMENT. 2) PRODUCT IS INSTALLED BY ANYONE OTHER THAN A LICENSED CONTRACTOR EXPERIENCED WITH INSTALLATIONS OF THIS TYPE OF PRODUCT.
 - 3) IF CHANGES HAVE OCCURRED TO THE PRODUCT'S CERTIFICATION ENTITY'S CERTIFICATE THAT CAUSE THESE INSTALLATIONS TO BE INCORRECT OR INCONSISTENT WITH WHAT HAS BEEN TESTED.
 8. THE LEAST DESIGN PRESSURE SPECIFIED EITHER IN THIS DRAWING OR IN THE PRODUCTS CERTIFICATION SHALL CONTROL FOR THE INSTALLED PRODUCT.
 9. THESE DRAWINGS CERTIFY THE PRODUCT INSTALLATION ONLY. WATER PROOFING OF THE INSTALLED PRODUCT IS NOT PART OF THIS INSTALLATION CERTIFICATION. THAT RESPONSIBILITY SHALL BE THAT OF THE MANUFACTURER &/OR INSTALLER.
- INSTALLATION EVALUATION IS BASED ON APPLICABLE ANCHOR STANDARDS AND/OR INFORMATION & RESULTS FROM APPLICABLE TEST REPORTS. THE FLORIDA BUILDING CODE VERSION CONSIDERED WITH THE EVALUATION WAS THAT IN FORCE AT THE TIME OF THE EVALUATION. IN THE EVENT OF CODE VERSION CHANGES/UPDATES OR IN THE EVENT THAT NEW OR ADDITIONAL TESTING IS COMPLETED ON THE REFERENCED PRODUCT, PRIOR TO STATING CODE COMPLIANCE WITH THE STATE, THE MANUFACTURER SHALL CONFIRM WITH THE INSTALLATION EVALUATION ENGINEER OF RECORD THAT THE INSTALLATIONS SPECIFIED HERE-IN ARE CURRENT WITH THE THEN CURRENT TESTING, CODE AND APPLICABLE STANDARDS.

FRAME ANCHOR REQUIREMENTS TABLE

OPENING TYPE (SUBSTRATE)	FRAME/CLIP/NAIL FIN/HINGE/STRIKE TO OPENING FASTENER TYPE	MINIMUM EMBED	MINIMUM EDGE DIST.
FRAME/SILL SCREWS			
(4) MIN. 2X6 WOOD FRAME OR BUCK (MIN. GR. 3 & G=0.55)	NO. 10 SMS OR WOOD SCREW	1 1/4"	3/4"
MIN. 18 GA. 33 KSI METAL STUD	NO. 10 GR. 5 SELF TAP/DRILL SCREW	FULL	1/2"
MIN. 1/8" THK A36 STEEL	NO. 10 GR. 5 SELF TAP/DRILL SCREW	FULL	1/2"
MIN. 1/8" THK 6063-T5 ALUM.	NO. 10 GR. 5 SELF TAP/DRILL SCREW	FULL	1/2"
C-90 CMU/2500 PSI CONCRETE	(1) 1/4" CONCRETE SCREW	1 1/4"	2"
(2) INSTALLATION CLIP SCREWS (BENT & 3-PIECE CLIPS)			
(4) MIN. 2X6 WOOD FRAME OR BUCK (MIN. GR. 3 & G=0.55)	NO. 8 X 1 1/2" SMS	1 3/8"	(3) N/A
MIN. 1/8" THK A36 STEEL	NO. 8 GR. 5 SELF TAP/DRILL SCREW	FULL	(3) N/A
MIN. 1/8" THK 6063-T5 ALUM.	NO. 8 GR. 5 SELF TAP/DRILL SCREW	FULL	(3) N/A
INSTALLATION CLIP SCREWS (STRAIGHT CLIPS)			
MIN. 2X6 WOOD FRAME OR BUCK (MIN. GR. 3 & G=0.55)	NO. 8 X 1 1/2" SMS	1 3/8"	3/4"
MIN. 18 GA. 33 KSI METAL STUD	NO. 8 GR. 5 SELF TAP/DRILL SCREW	FULL	1/2"
MIN. 1/8" THK A36 STEEL	NO. 8 GR. 5 SELF TAP/DRILL SCREW	FULL	1/2"
MIN. 1/8" THK 6063-T5 ALUM.	NO. 8 GR. 5 SELF TAP/DRILL SCREW	FULL	1/2"
(3) NAILING FIN FASTENERS			
(4) MIN. 2X6 WOOD FRAME OR BUCK (MIN. GR. 3 & G=0.55)	NO. 8 SMS SCREW	1 3/8"	1/2"
MIN. 2X6 WOOD FRAME OR BUCK (MIN. GR. 3 & G=0.55)	11 GA. ROOFING NAIL	1 3/8"	1/2"
MIN. 1/8" THK A36 STEEL	NO. 8 GR. 5 SELF TAP/DRILL SCREW	FULL	1/2"
MIN. 1/8" THK 6063-T5 ALUM.	NO. 8 GR. 5 SELF TAP/DRILL SCREW	FULL	1/2"
HINGE & STRIKE SCREWS			
(4) MIN. 2X6 WOOD FRAME OR BUCK (MIN. GR. 3 & G=0.55)	NO. 8 SMS OR WOOD SCREW	1 1/4"	3/4"
MIN. 18 GA. 33 KSI METAL STUD	NO. 8 GR. 5 SELF TAP/DRILL SCREW	FULL	1/2"
MIN. 1/8" THK A36 STEEL	NO. 8 GR. 5 SELF TAP/DRILL SCREW	FULL	1/2"
MIN. 1/8" THK 6063-T5 ALUM.	NO. 8 GR. 5 SELF TAP/DRILL SCREW	FULL	1/2"
C-90 CMU/2500 PSI CONCRETE	(1) 3/16" CONCRETE SCREW	1 1/4"	2"

ALLOWABLE DESIGN PRESSURE

MAX. FRAME WIDTH (IN.)	MAX. FRAME HEIGHT (IN.)	ALLOWABLE POSITIVE PRESSURE (PSF)	ALLOWABLE NEGATIVE PRESSURE (PSF)
DOUBLE OPERABLE DOORS			
75	119 1/2	40	40
75	95 1/2	55	70
SINGLE OPERABLE DOORS			
37 7/8	119 1/2	40	40
37 7/8	95 1/2	55	70
FIXED PANEL DOORS			
37 7/8	119 1/2	55	70
ACTIVE/FIXED DOORS			
75	95 1/2	55	55

HINGE REQUIREMENTS

MAX. FRAME HEIGHT	QUANTITY PER PANEL
119.5"	6
107.875"	5
99.375"	4
83.875"	3

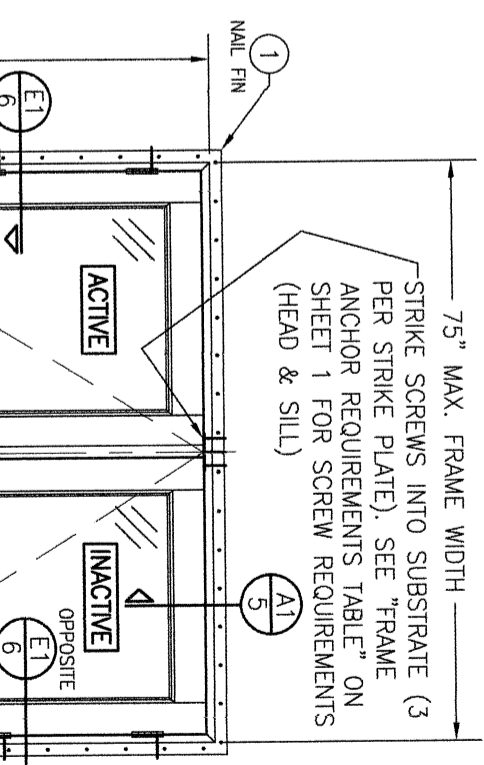
EDGE DISTANCE MAY BE DECREASED TO 1/2" IF SCREWS ARE ANGLED 15 TO 20 DEGREES AWAY FROM THE EDGE.

ANCHOR/SUBSTRATE EVALUATION NOTE:

ALL ANCHORS IN THEIR SPECIFIED SUBSTRATES HAVE BEEN ANALYZED IN ACCORDANCE WITH THEIR APPLICABLE STANDARD(S) AND ARE FOUND TO BE CAPABLE OF SUPPORTING ALL LOADS IMPOSED ON THEM UNDER THE GUIDELINES OF THIS DOCUMENT. ANY SUBSTRATES OR CONDITIONS OUTSIDE OF WHAT IS SHOWN HERE-IN SHALL BE SUBJECT TO JOB SPECIFIC ENGINEER'S REVIEW & CERTIFICATION.

INSTALLATION NOTE:

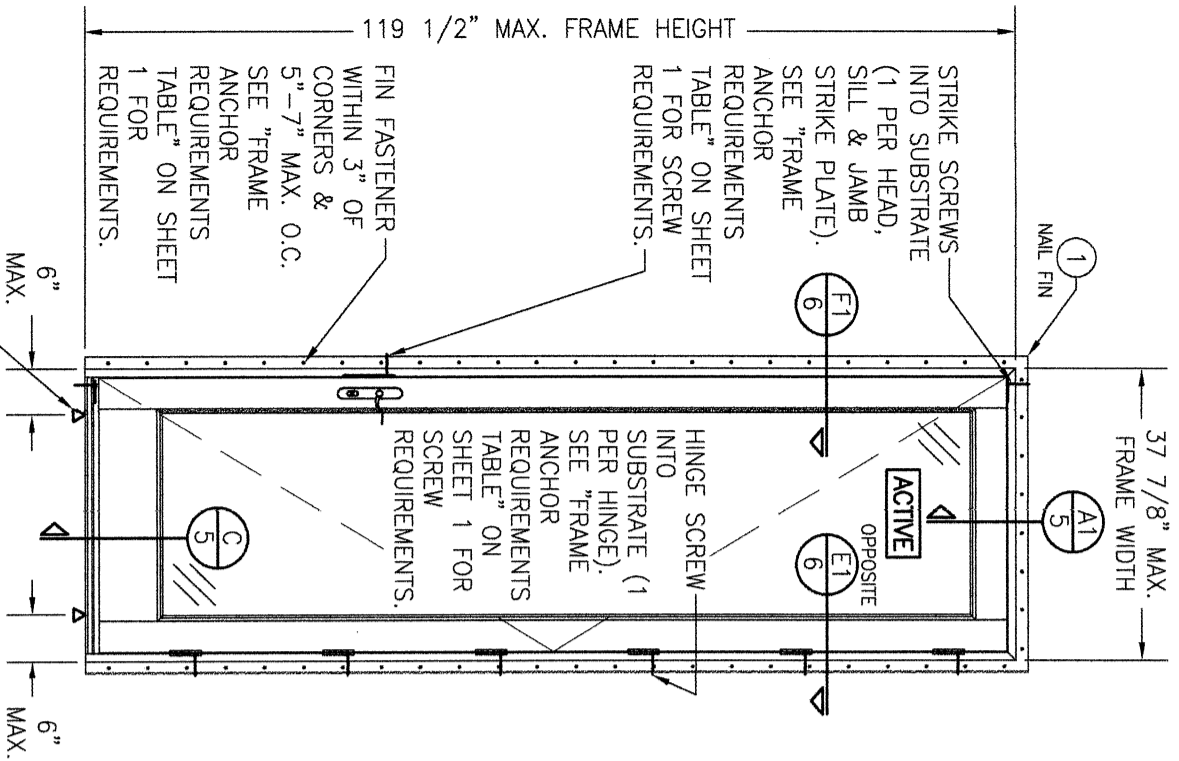
WHEN NECESSARY, INSTALLATION METHODS MAY BE MIXED WITH ANY ONE WINDOW SUCH THAT INDIVIDUAL SIDES OF THE WINDOW MAY USE ONE OR THE OTHER ANCHOR METHOD (EXAMPLE: LEFT SIDE MAY USE FRAME SCREWS METHOD WHILE OTHER SIDES USE FIN)



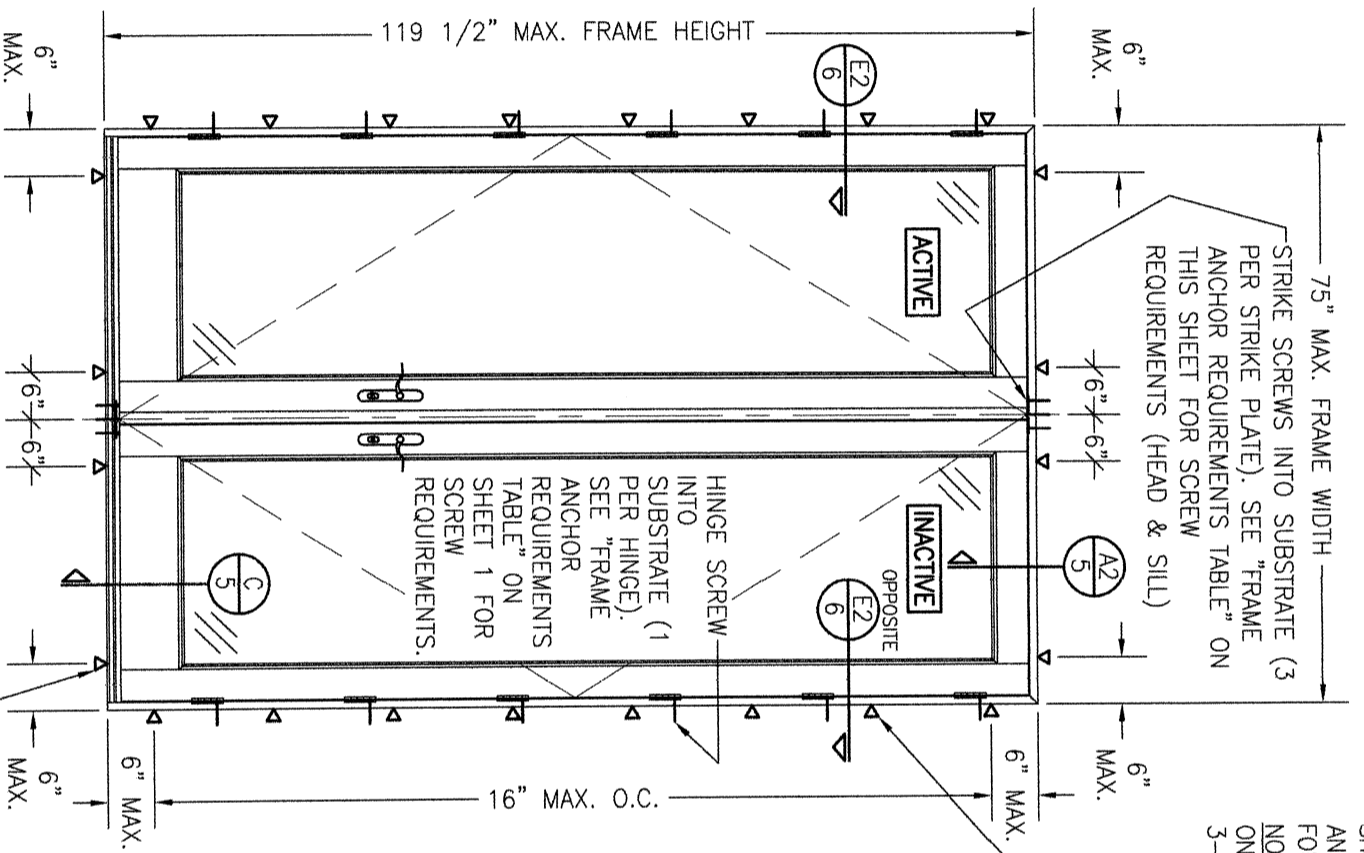
INTERIOR ELEVATION:
DOUBLE RECTANGULAR DOOR
SCALE: 1/2" = 1'-0"
(FIN MOUNT CONDITION)

<p>THESE DRAWINGS ARE APPLICABLE ONLY TO THE PRODUCTS SPECIFIED. THEY MAY NOT BE USED FOR THE ASSEMBLY AND/OR INSTALLATION OF ANY OTHER PRODUCT NOR MAY THEY BE USED FOR RATIONAL AND/OR LOCAL APPROVAL OF ANY PRODUCT NOT PRODUCED BY THE MANUFACTURER STATED ON THESE DRAWINGS.</p>		<p>DRAWN BY: W.R.M. DATE: 11/24/10</p>	<p>CHECKED BY: W.M.S.</p>
<p>NO. REVISION DESCRIPTION BY DATE</p> <p>A1 ADD ACTIVE/FIXED CONDITION W.R.M. 03/06/13</p> <p>B1 UPDATE TO CURRENT STANDARDS W.W.S. 08/28/17</p> <p>C1 UPDATE TO NEW TESTING W.W.S. 06/02/21</p> <p>D1 ADDED NEW CLIP INSTALL OPTION W.W.S. 06/19/24</p>	<p>DRAWING TITLE: PELLA ARCHITECT NON-IMPACT ALUMINUM CLAD IN-SWING DOOR INSTALLATIONS</p>		
<p>CERTIFICATION</p> <p>WARREN W. SCHAEFER, P.E. P.F. NO. 44135</p>	<p>CONSULTANTS: W. W. SCHAEFER ENGINEERING & CONSULTING, P.A. 25601 AYSEN DRIVE PUNTA GORDA, FL 33983 PHONE: 561-744-3424</p>	<p>MANUFACTURER: PELLA CORPORATION 102 MAIN STREET PELLA, IA 50219</p>	<p>DRAWING NO. 1724 REV. D SHEET NO. 1 OF 9</p>

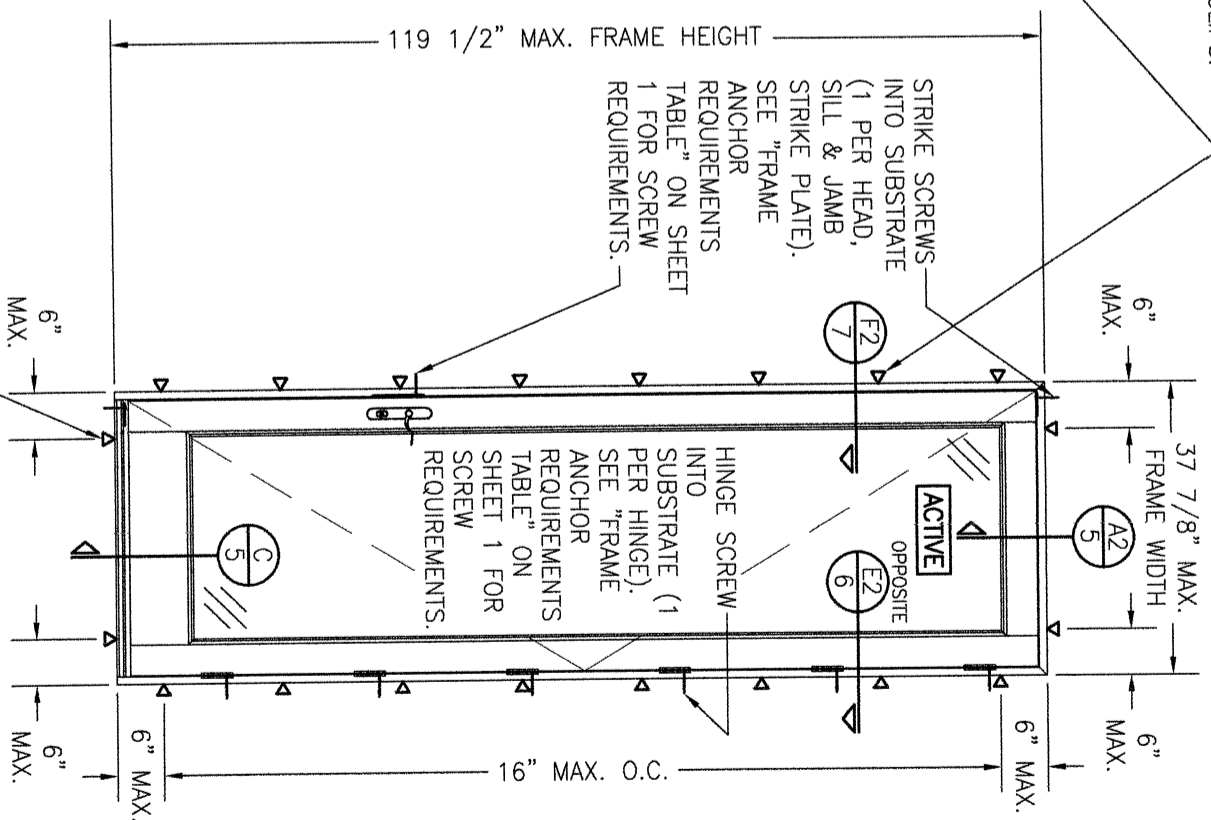
INTERIOR ELEVATION:
 SINGLE RECTANGULAR DOOR
 SCALE: 1/2" = 1'-0"
 (FIN MOUNT CONDITION)



INTERIOR ELEVATION:
 DOUBLE RECTANGULAR DOOR
 SCALE: 1/2" = 1'-0"
 (FRAME SCREW & CLIP MOUNT CONDITION)



INTERIOR ELEVATION:
 SINGLE RECTANGULAR DOOR
 SCALE: 1/2" = 1'-0"
 (FRAME SCREW & CLIP MOUNT CONDITION)



FRAME SCREWS OR INSTALLATION CLIPS WHERE SHOWN AT HEAD & SIDES. SEE "FRAME ANCHOR REQUIREMENTS TABLE" ON SHEET 1 FOR REQUIREMENTS.
 NOTE: SEE "ALTERNATE 3-PIECE CLIP DETAIL" ON SHEET 8 FOR SPECIAL CONDITIONS OF 3-PIECE CLIPS.

NO.	REVISION DESCRIPTION	BY	DATE

DRAWING TITLE
PELLA ARCHITECT NON-IMPACT ALUMINUM CLAD IN-SWING DOOR INSTALLATIONS

CONSULTANTS
W. W. SCHAEFER ENGINEERING & CONSULTING, P.A.
 25601 AYSEN DRIVE
 PUNTA GORDA, FL 33983
 PHONE: 561-744-3424

MANUFACTURER



PELLA CORPORATION
 102 MAIN STREET
 PELLA, IA 50219
 641-621-1000

CERTIFICATION

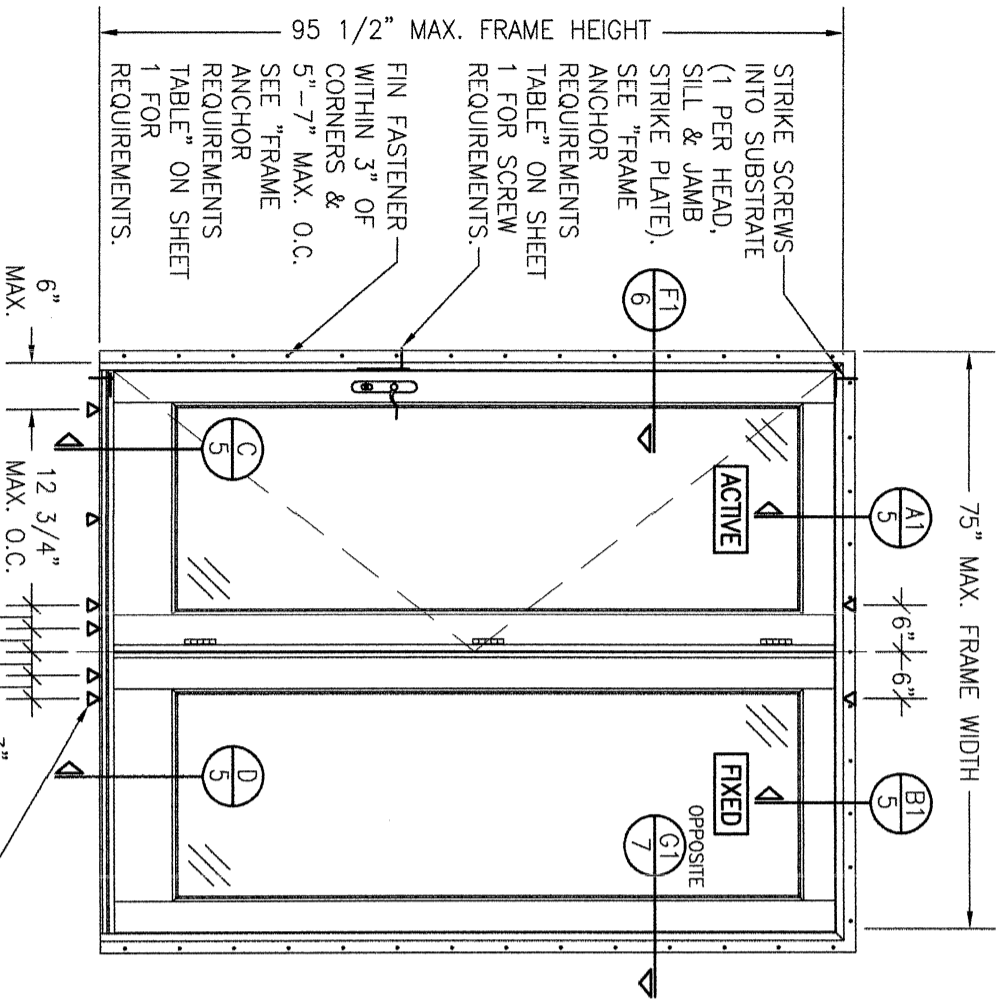
WARREN W. SCHAEFER, P.E.
 P.E. NO. 44135

DRAWING NO. REV.
1724 **D**

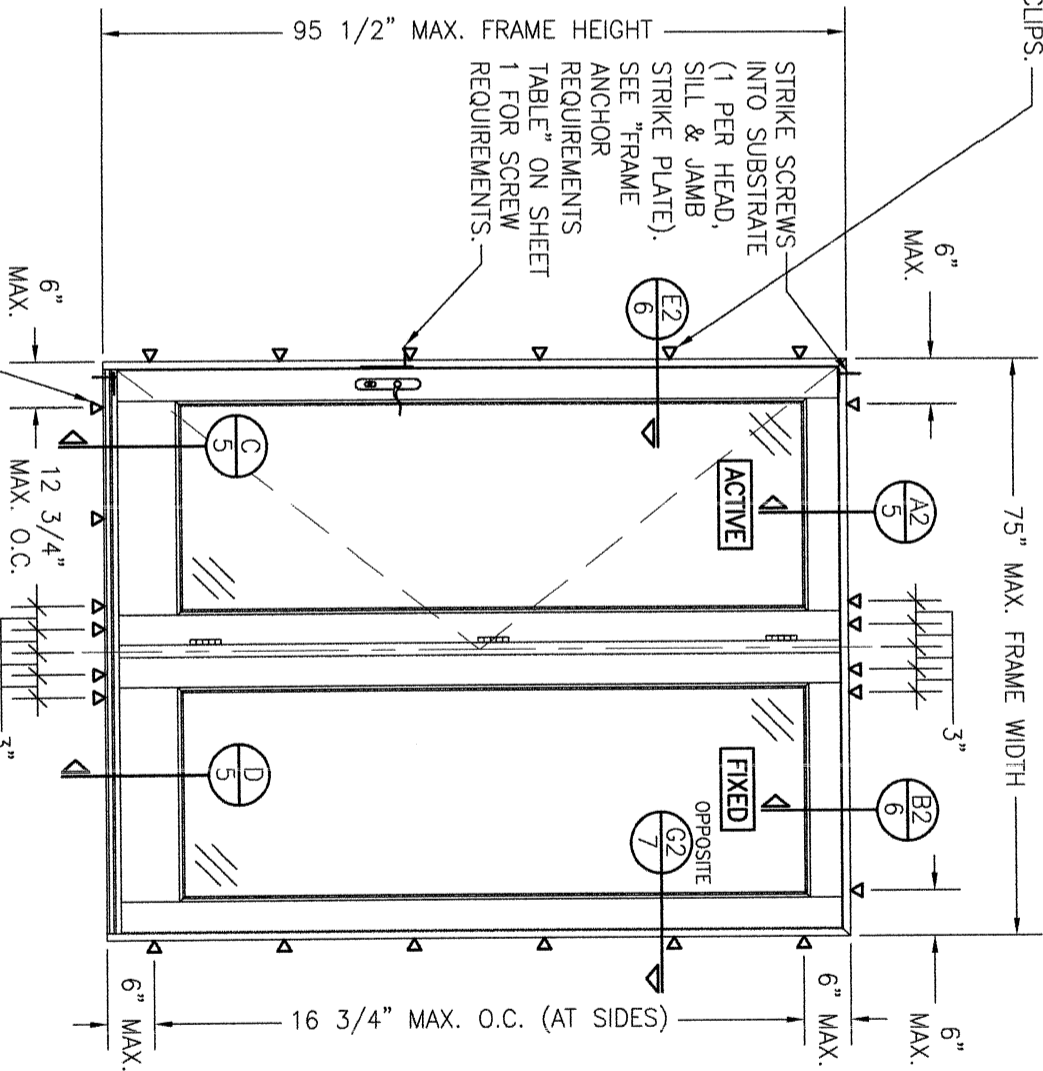
SHEET NO.
2 OF **9**

DRAWN BY: W.R.M.
 CHECKED BY: W.M.S.
 DATE: 11/24/10

FRAME SCREWS OR INSTALLATION CLIPS WHERE SHOWN AT HEAD & SIDES. SEE "FRAME ANCHOR REQUIREMENTS TABLE" ON SHEET 1 FOR REQUIREMENTS.
 NOTE: SEE "ALTERNATE 3-PIECE CLIP DETAIL" ON SHEET 8 FOR SPECIAL CONDITIONS OF 3-PIECE CLIPS.



INTERIOR ELEVATION:
DOUBLE XO DOOR
 SCALE: 1/2" = 1'-0"
 (NAIL FIN MOUNT CONDITION)




INTERIOR ELEVATION:
DOUBLE XO DOOR
 SCALE: 1/2" = 1'-0"
 (FRAME SCREW & CLIP MOUNT CONDITION)

NO.	REVISION DESCRIPTION	BY	DATE

DRAWN BY: W.R.M.
 CHECKED BY: W.M.S.
 PLOT: 1-24
 DATE: 11/24/10

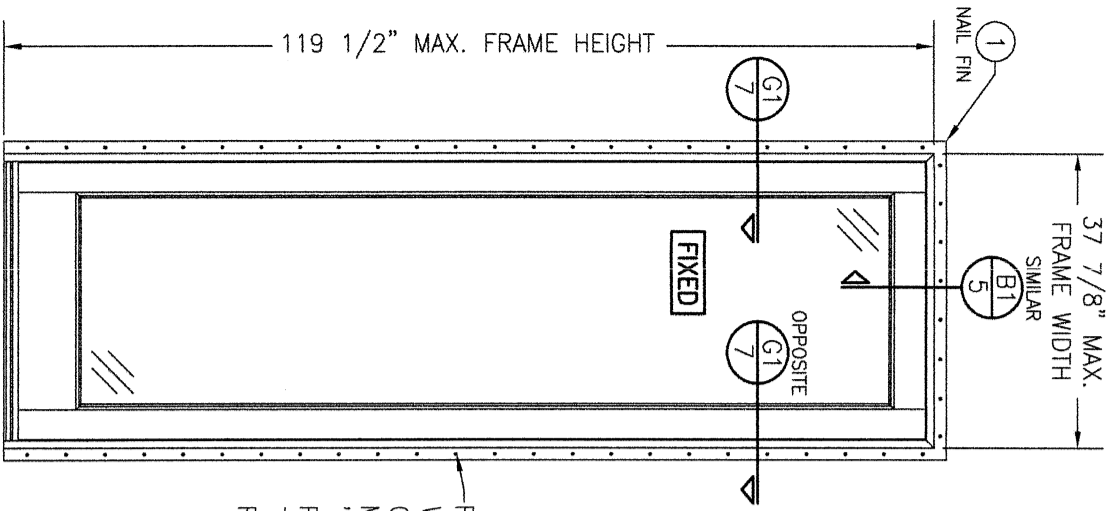
DRAWING TITLE: **PELLA ARCHITECT NON-IMPACT ALUMINUM CLAD IN-SWING DOOR INSTALLATIONS**

CONSULTANTS: **W. W. SCHAEFER ENGINEERING & CONSULTING, P.A.**
 25601 AYSEN DRIVE
 PUNTA GORDA, FL 33983
 PHONE: 561-744-3424

MANUFACTURER: **PELLA CORPORATION**

 102 MAIN STREET
 PELLA, IA 50219
 641-621-1000

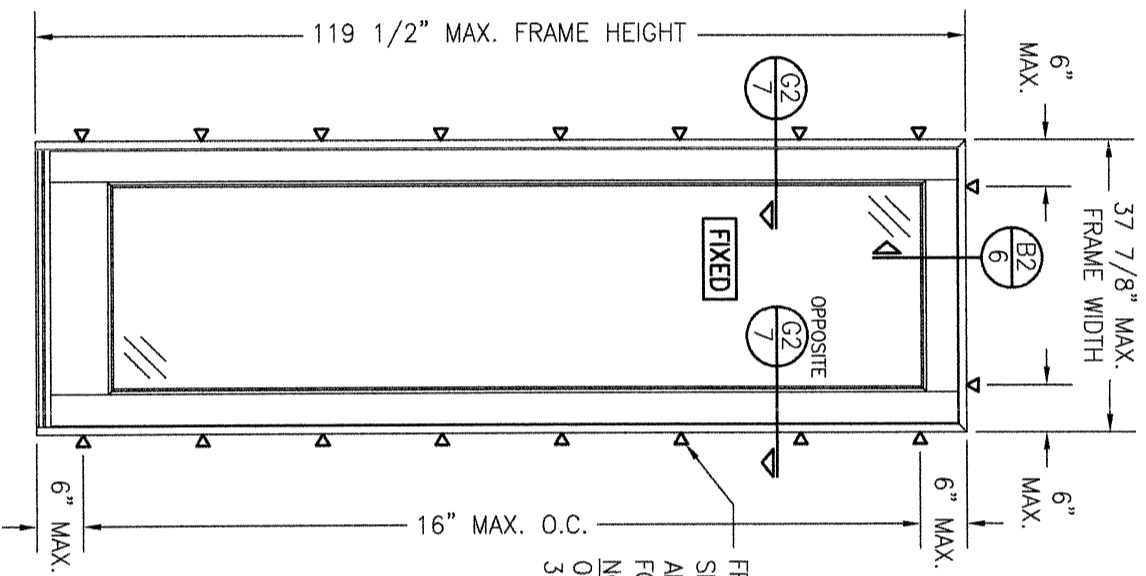
CERTIFICATION
 WARREN W. SCHAEFER, P.E.
 P.E. NO. 44135

DRAWING NO.: 1724
 REV. D
 SHEET NO. 3 OF 9



**INTERIOR ELEVATION:
SINGLE FIXED PANEL**
SCALE: 1/2" = 1'-0"
(FIN MOUNT CONDITION)

FIN FASTENER
WITHIN 3" OF
CORNERS & 5"-7"
MAX. O.C. SEE
"FRAME ANCHOR
REQUIREMENTS
TABLE" ON SHEET 1
FOR REQUIREMENTS.



**INTERIOR ELEVATION:
SINGLE FIXED PANEL**
SCALE: 1/2" = 1'-0"
(FRAME SCREW OR CLIP MOUNT CONDITION)


FRAME SCREWS OR INSTALLATION CLIPS WHERE
SHOWN AT HEAD & SIDES. SEE "FRAME
ANCHOR REQUIREMENTS TABLE" ON SHEET 1
FOR REQUIREMENTS.
NOTE: SEE "ALTERNATE 3-PIECE CLIP DETAIL"
ON SHEET 8 FOR SPECIAL CONDITIONS OF
3-PIECE CLIPS.

NO.	REVISION DESCRIPTION	BY	DATE

DRAWN BY: W.R.M.
CHECKED BY: W.M.S.
PLOT: 1-24
DATE: 11/24/10

DRAWING TITLE PELLA ARCHITECT NON-IMPACT ALUMINUM CLAD
IN-SWING DOOR INSTALLATIONS

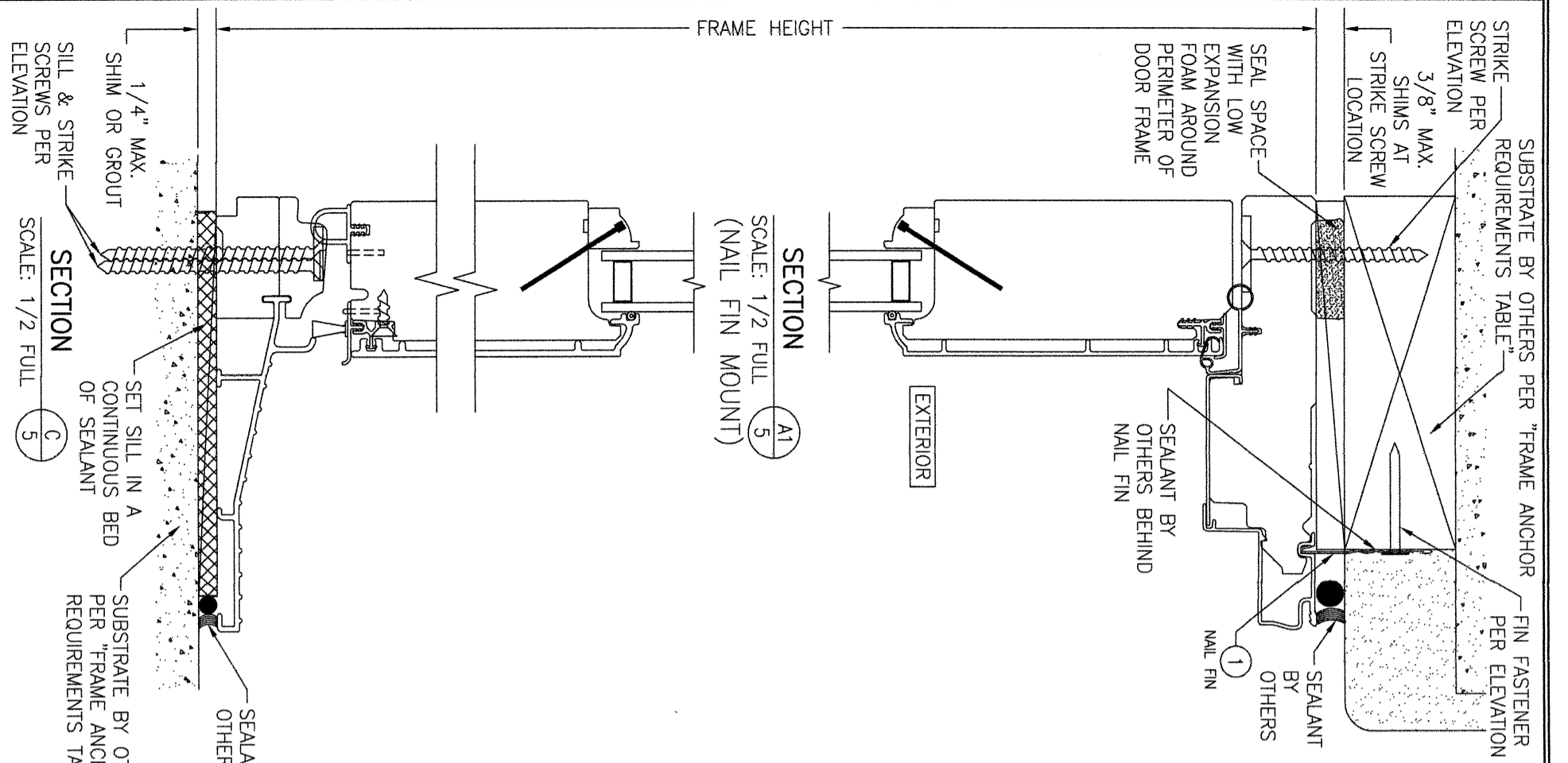
CONSULTANTS
W. W. SCHAEFER ENGINEERING
& CONSULTING, P.A.
25601 AYSAN DRIVE
PUNTA GORDA, FL 33983
PHONE: 561-744-3424

MANUFACTURER
 PELLA CORPORATION
102 MAIN STREET
PELLA, IA 50219
641-621-1000

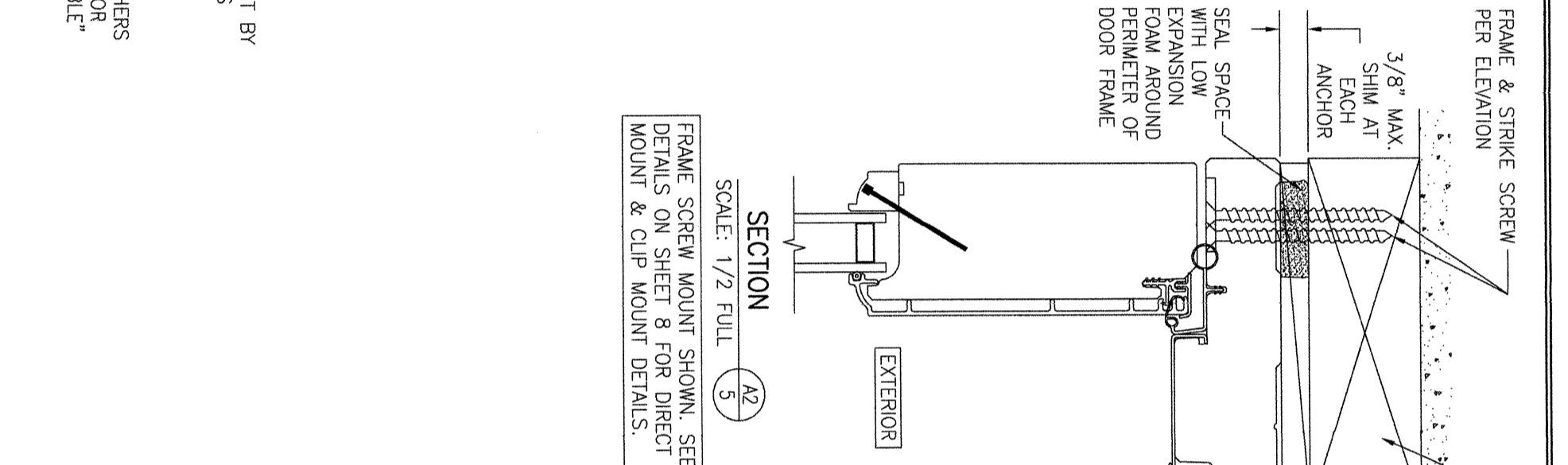
CERTIFICATION

WARREN W. SCHAEFER, P.E.
P.E. NO. 44135

DRAWING NO. 1724
REV. D
SHEET NO. 4 OF 9

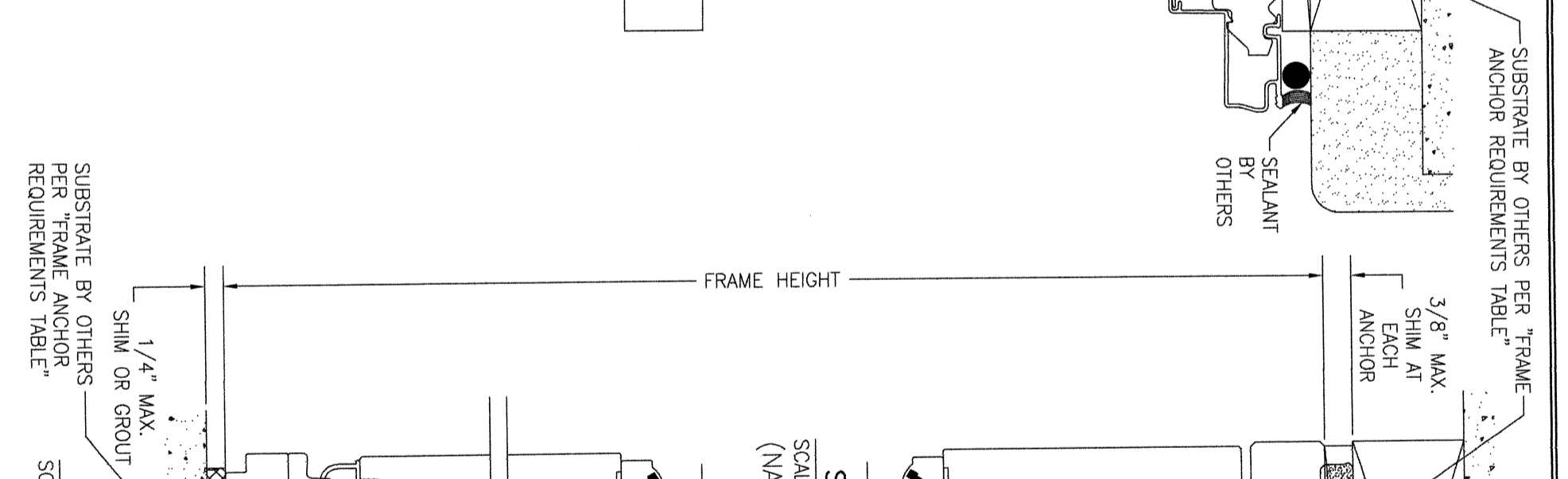


SECTION A1
SCALE: 1/2 FULL
(NAIL FIN MOUNT)

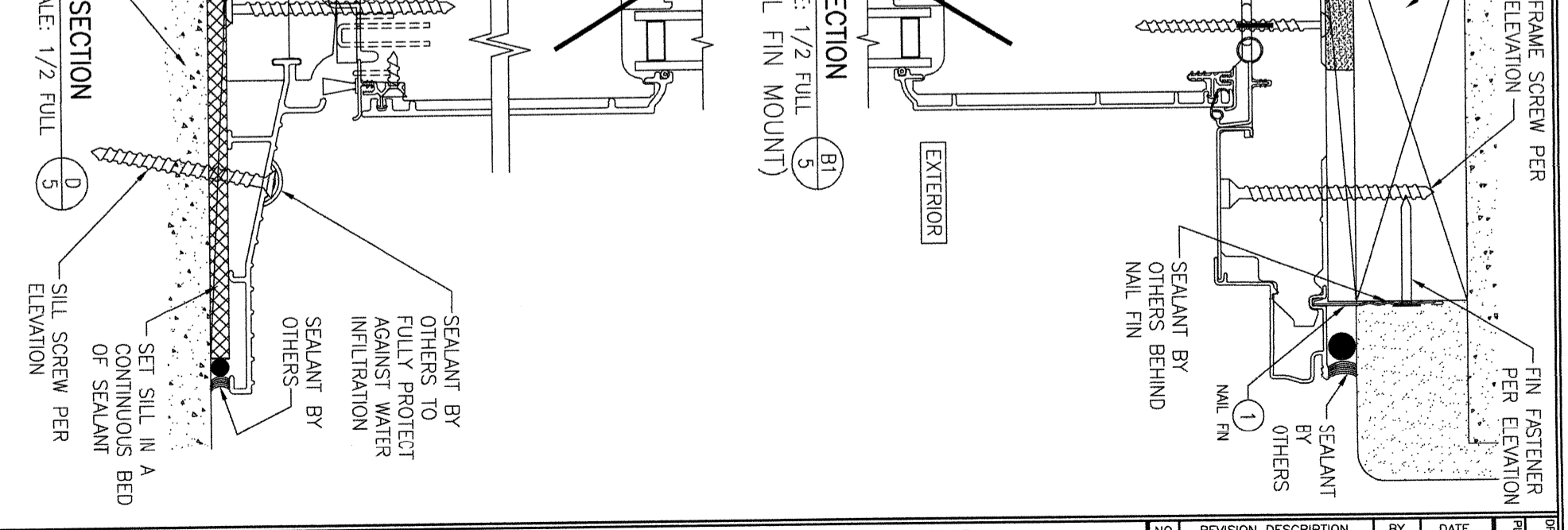


SECTION A2
SCALE: 1/2 FULL
(FRAME SCREW MOUNT)

FRAME SCREW MOUNT SHOWN. SEE DETAILS ON SHEET 8 FOR DIRECT MOUNT & CLIP MOUNT DETAILS.



SECTION B1
SCALE: 1/2 FULL
(NAIL FIN MOUNT)



SECTION C
SCALE: 1/2 FULL


NO.	REVISION DESCRIPTION	BY	DATE
1-2			

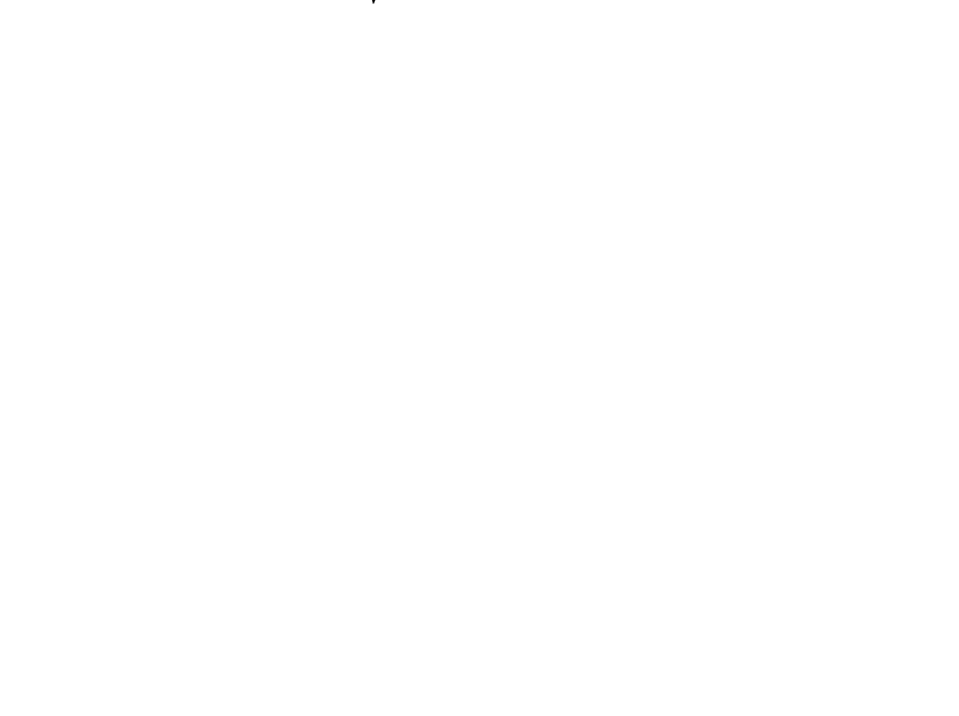
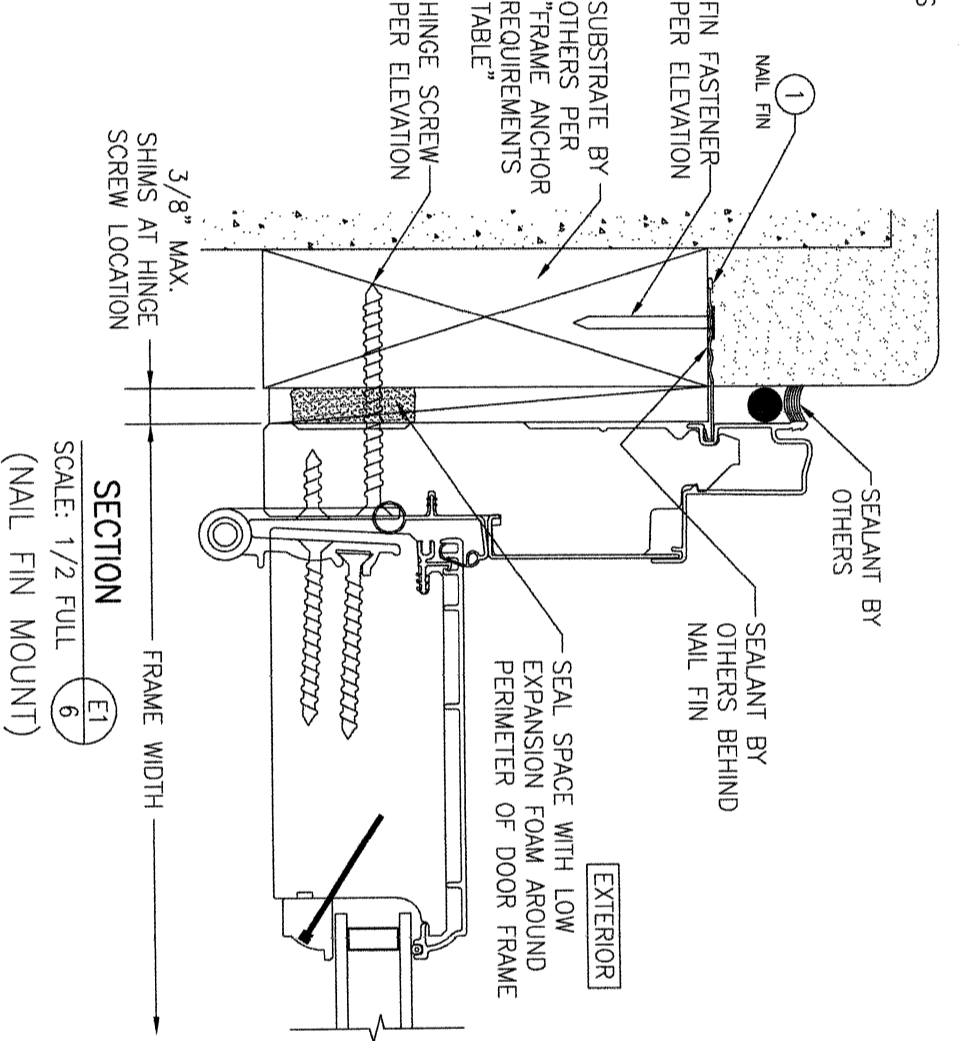
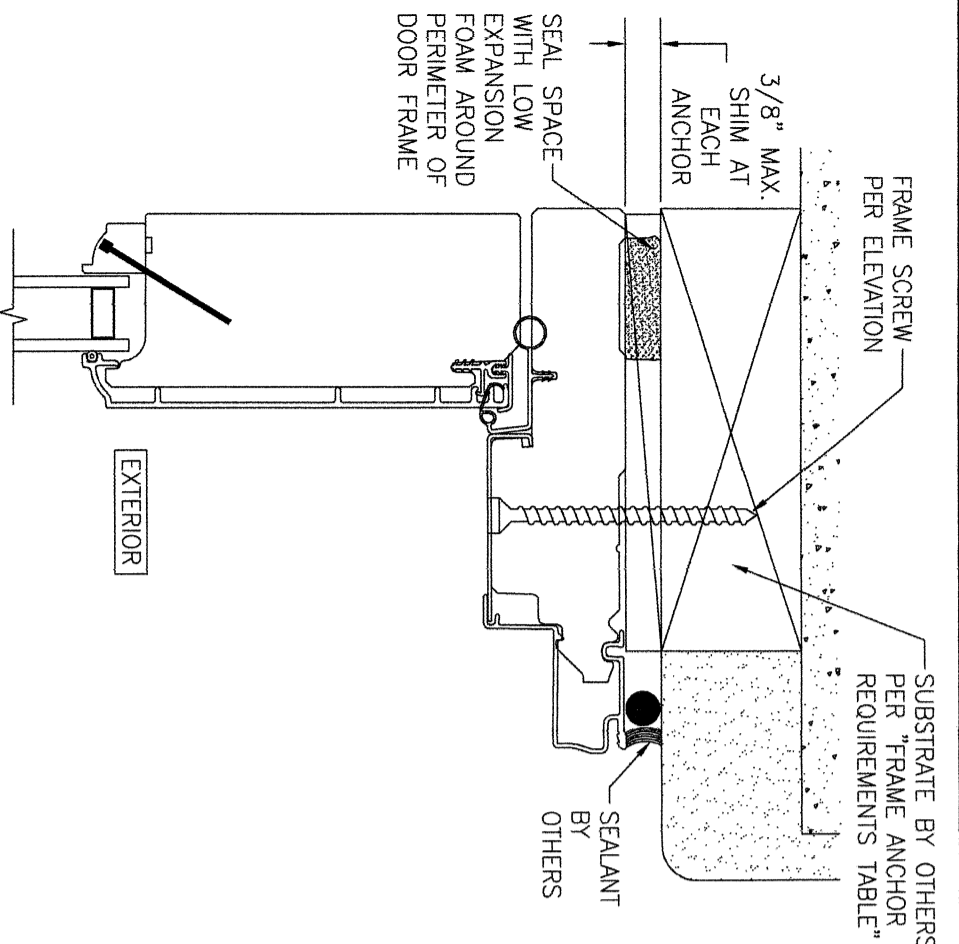
CERTIFICATION
WARREN W. SCHAEFER, P.E.
P.E. NO. 44135

DRAWING TITLE
PELLA ARCHITECT NON-IMPACT ALUMINUM CLAD IN-SWING DOOR INSTALLATIONS

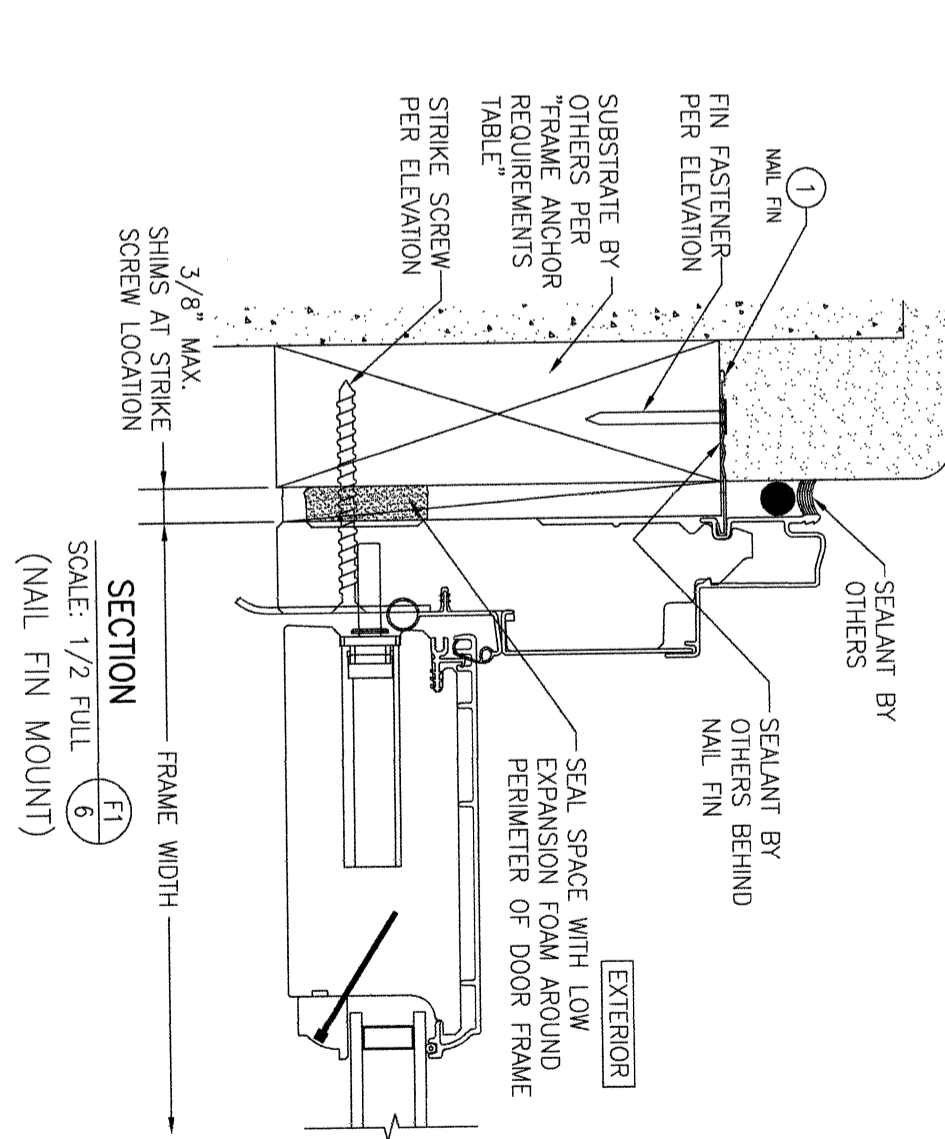
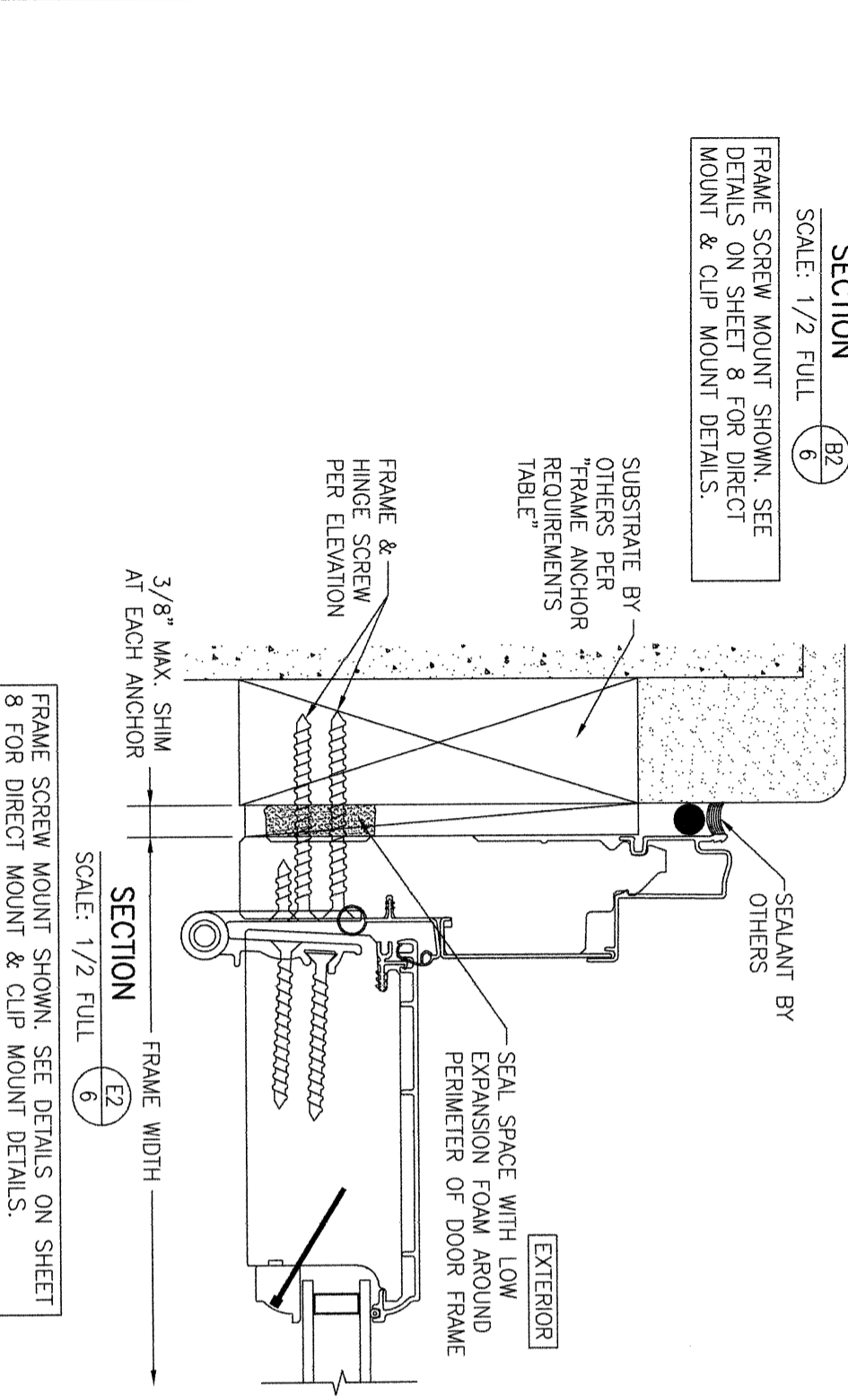
CONSULTANTS
W. W. SCHAEFER ENGINEERING & CONSULTING, P.A. (CA 6809)
7480 150TH COURT NORTH
PALM BEACH GARDENS, FL 33418
PHONE: 561-744-3424

MANUFACTURER
PELLA CORPORATION
102 MAIN STREET
PELLA, IA 50219
641-621-1000





FRAME SCREW MOUNT SHOWN. SEE DETAILS ON SHEET 8 FOR DIRECT MOUNT & CLIP MOUNT DETAILS.



NO.	REVISION DESCRIPTION	BY	DATE

DRAWING TITLE: PELLA ARCHITECT NON-IMPACT ALUMINUM CLAD IN-SWING DOOR INSTALLATIONS

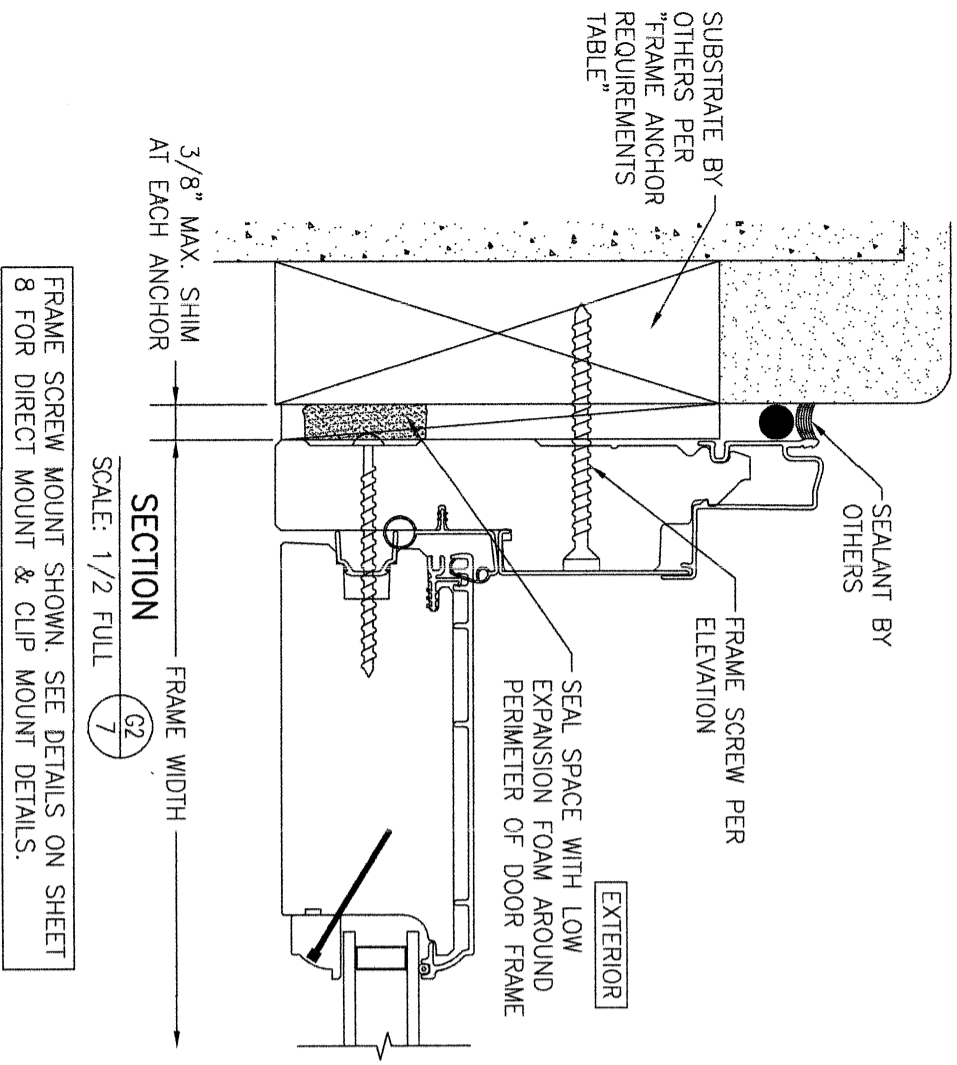
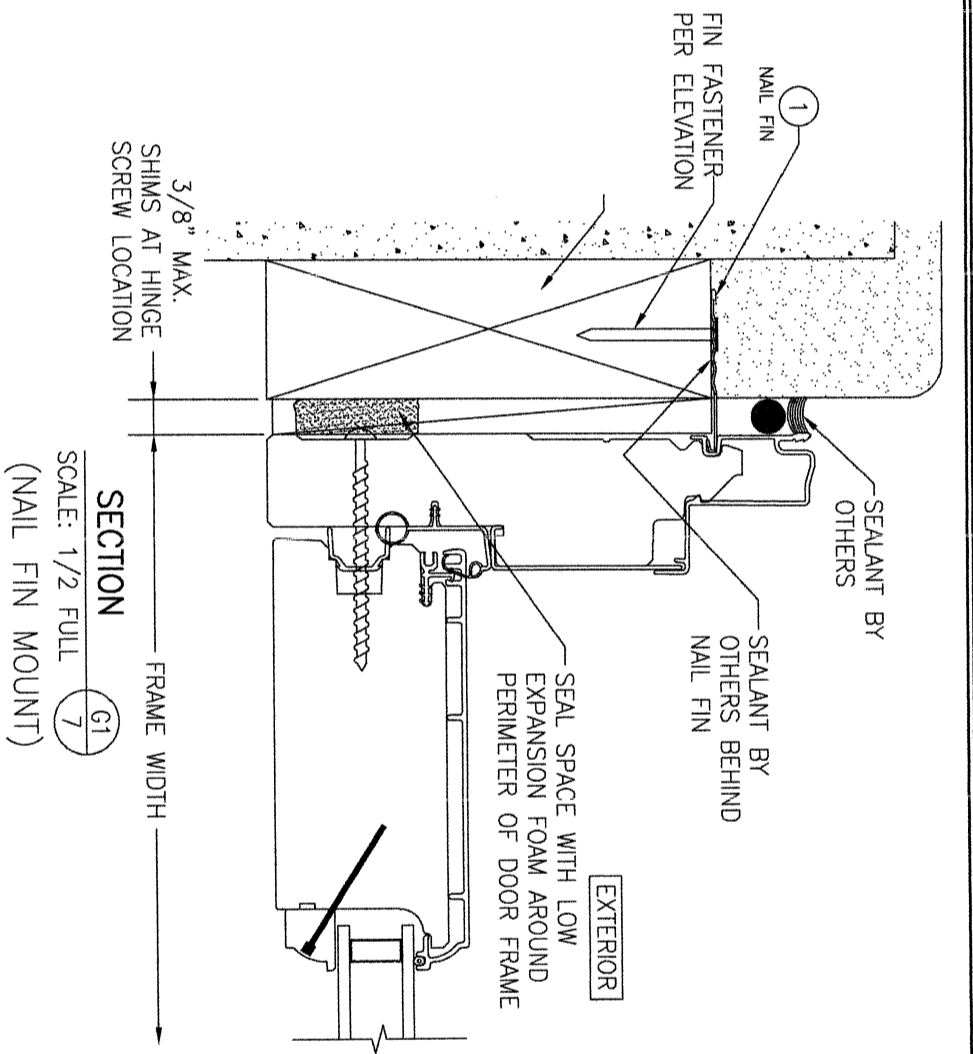
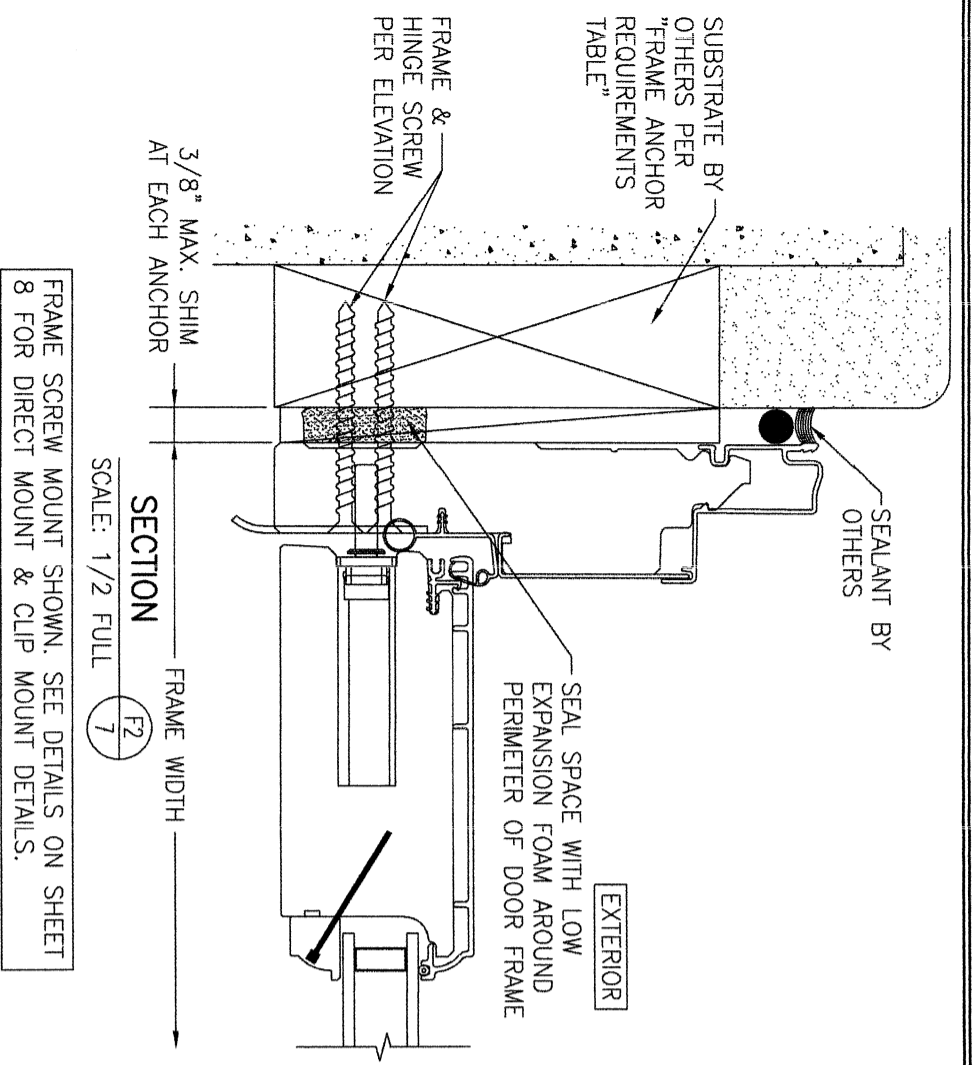
CONSULTANTS: W. W. SCHAEFER ENGINEERING & CONSULTING, P.A. (CA 6809)
7480 150TH COURT NORTH, PALM BEACH GARDENS, FL 33418, PHONE: 561-744-3424

MANUFACTURER: PELLA CORPORATION
102 MAIN STREET, PELLA, IA 50219, 641-621-1000

CERTIFICATION: WARREN W. SCHAEFER, P.E., P.E. NO. 44135

DRAWING NO.: 1724
SHEET NO.: 6 OF 9

DRAWN BY: W.R.M.
CHECKED BY: W.M.S.
DATE: 11/24/10



NO.	REVISION DESCRIPTION	BY	DATE
1-2			

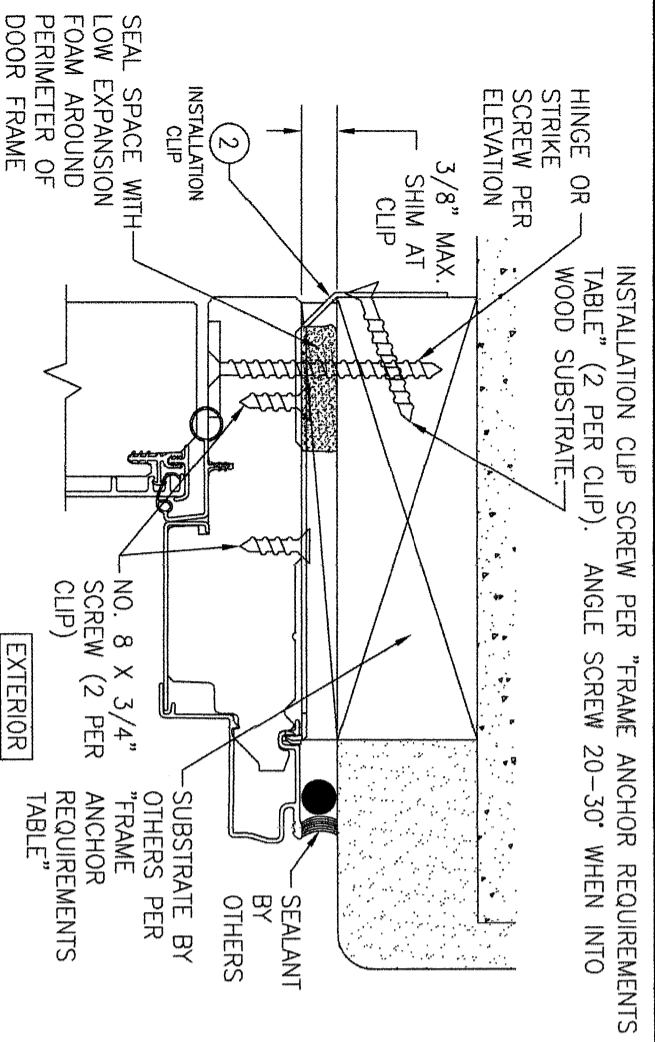
DRAWN BY: W.R.M.
 CHECKED BY: W.M.S.
 DATE: 11/24/10

PELLA CORPORATION
 102 MAIN STREET
 PELLA, IA 50219
 641-621-1000

W. W. SCHAEFER ENGINEERING & CONSULTING, P.A. (CA 6809)
 7480 150TH COURT NORTH
 PALM BEACH GARDENS, FL 33418
 PHONE: 561-744-3424

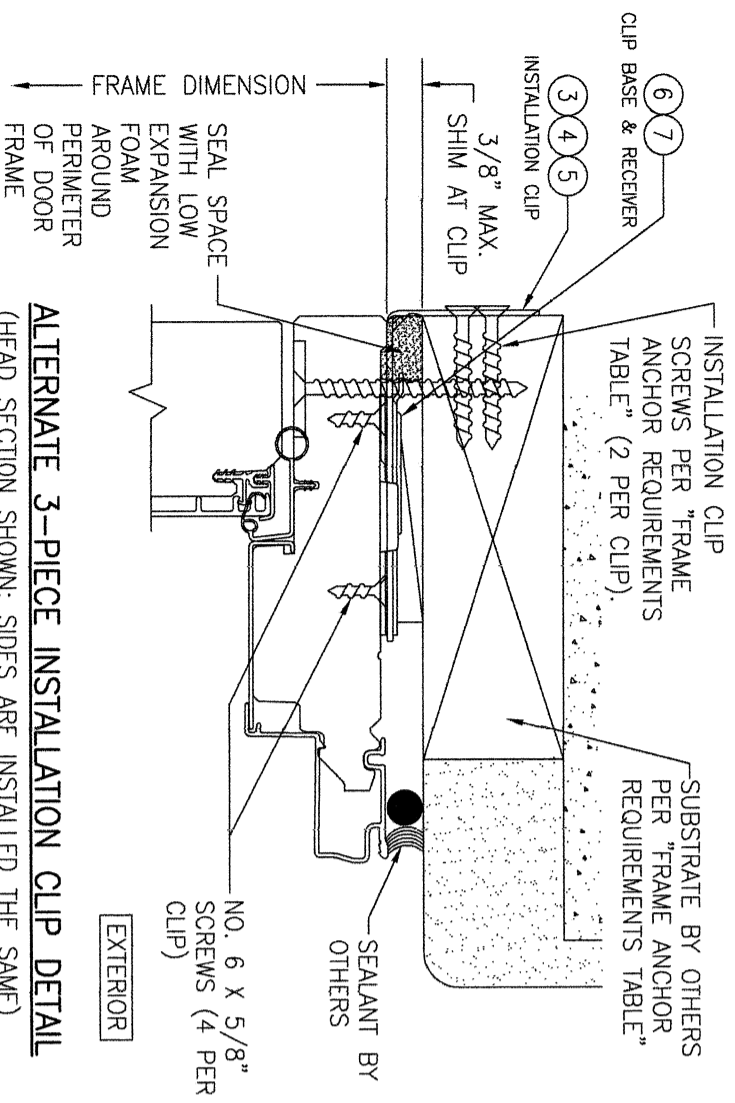
WARREN W. SCHAEFER, P.E.
 P.E. NO. 44135

DRAWING NO. 1724
 REV. D
 SHEET NO. 7 OF 9



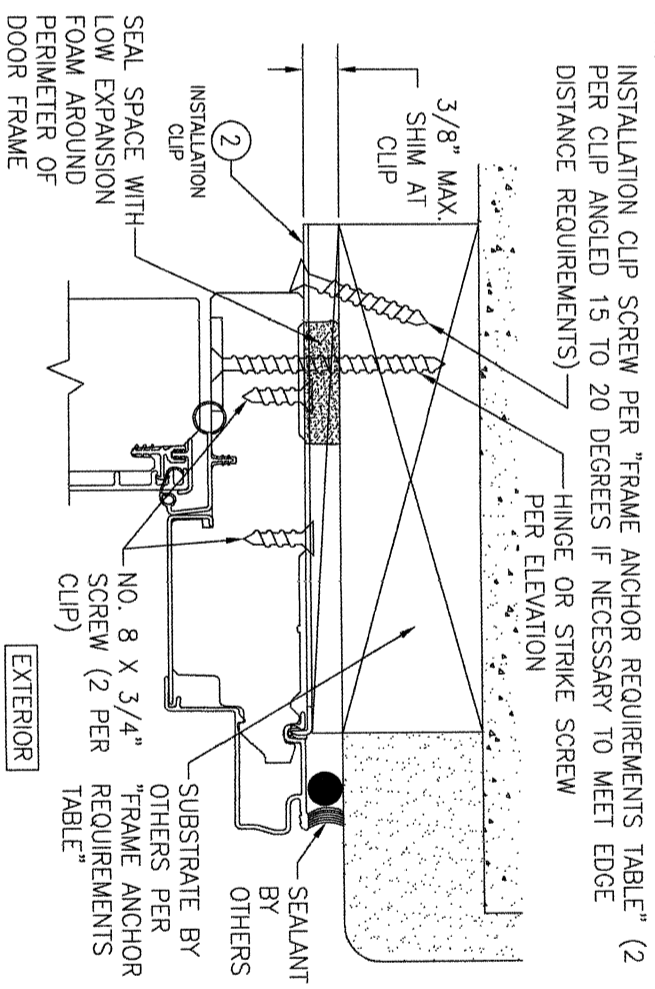
STANDARD INSTALLATION CLIP DETAIL
(BENT CLIP CONDITION)

(HEAD SECTION SHOWN; SIDES ARE INSTALLED THE SAME)
(FOR DETAIL NOT SHOWN, SEE OTHER SECTIONS)
(OPERABLE DOOR SHOWN, FIXED PANEL DOORS ALSO APPLY)
(INSTALLATION CLIPS ARE NOT APPLICABLE AT SILL)



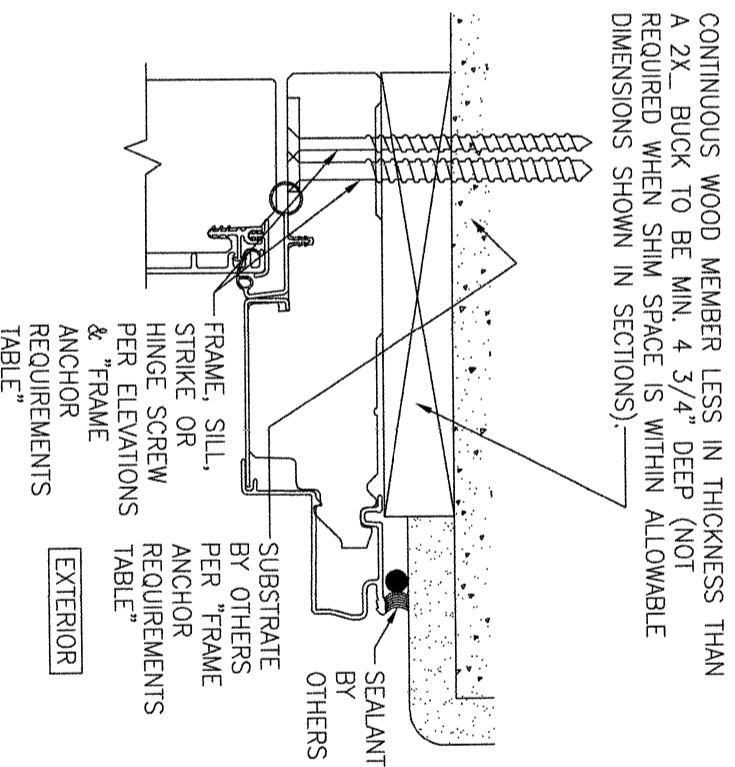
ALTERNATE 3-PIECE INSTALLATION CLIP DETAIL

(HEAD SECTION SHOWN; SIDES ARE INSTALLED THE SAME)
(FOR DETAIL NOT SHOWN, SEE OTHER SECTIONS)
(OPERABLE DOOR SHOWN, FIXED PANEL DOORS ALSO APPLY)
(INSTALLATION CLIPS ARE NOT APPLICABLE AT SILL)
NOTE: 3-PIECE CLIPS MAY ACT AS SPOT OR FULL REPLACEMENTS OF EITHER THE FRAME SCREWS, STANDARD BENT CLIPS OR STRAIGHT CLIPS. THEREFORE, ANY ONE OR ALL OF THE FRAME SCREWS/CLIPS SPECIFIED IN THE ELEVATION(S) MAY BE REPLACED WITH 3-PIECE CLIPS.



ALTERNATE INSTALLATION CLIP DETAIL
(STRAIGHT CLIP CONDITION)

(HEAD SECTION SHOWN; SIDES ARE INSTALLED THE SAME)
(FOR DETAIL NOT SHOWN, SEE OTHER SECTIONS)
(OPERABLE DOOR SHOWN, FIXED PANEL DOORS ALSO APPLY)
(INSTALLATION CLIPS ARE NOT APPLICABLE AT SILL)



OPTIONAL DIRECT MOUNT DETAIL
TO SUBSTRATE WITH SPACER

(HEAD SECTION SHOWN; SILL & SIDES ARE INSTALLED THE SAME)
(FOR DETAIL NOT SHOWN, SEE OTHER SECTIONS)
(OPERABLE DOOR SHOWN, FIXED PANEL DOORS ALSO APPLY)

NO.	REVISION DESCRIPTION	BY	DATE

DRAWING TITLE PELLA ARCHITECT NON-IMPACT ALUMINUM CLAD IN-SWING DOOR INSTALLATIONS

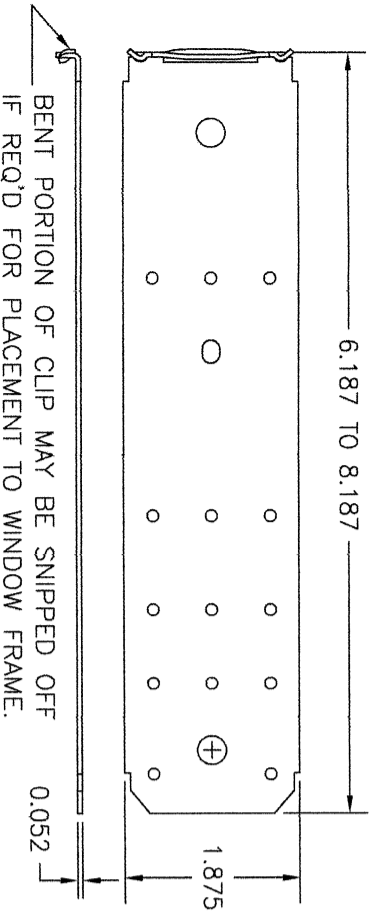
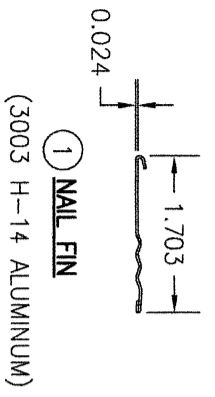
CONSULTANTS W. W. SCHAEFER ENGINEERING & CONSULTING, P.A. (CA 6809)
7480 150TH COURT NORTH
PALM BEACH GARDENS, FL 33418
PHONE: 561-744-3424

MANUFACTURER PELLA CORPORATION
102 MAIN STREET
PELLA, IA 50219
641-621-1000

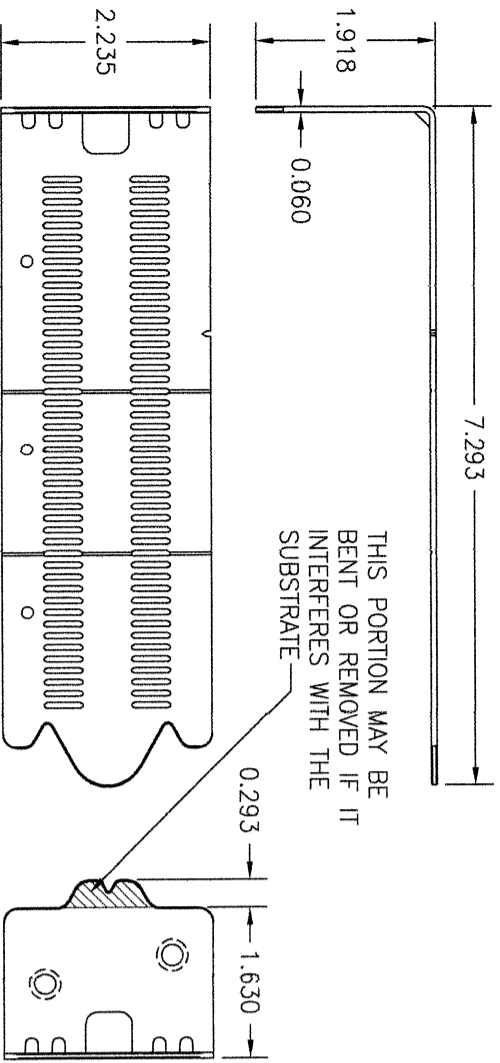
CERTIFICATION
WARREN W. SCHAEFER, P.E.
P.E. NO. 44135

DRAWING NO. 1724
REV. D
SHEET NO. 8 OF 9

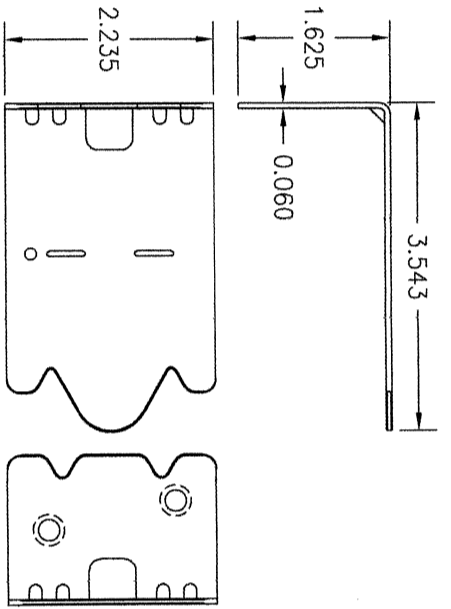
DRAWN BY: W.R.M.
CHECKED BY: W.W.S.
DATE: 11/24/10



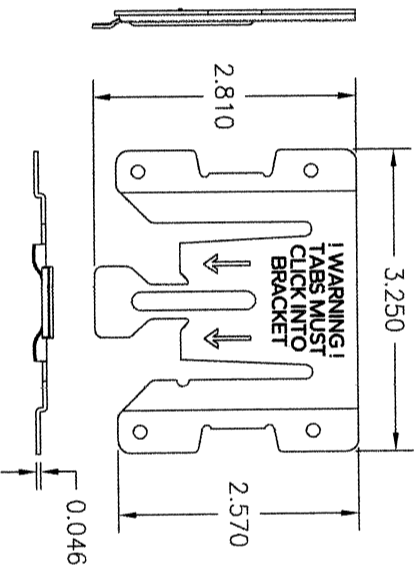
(2) **FRAME INSTALLATION CLIP**
(50 KSI STEEL)



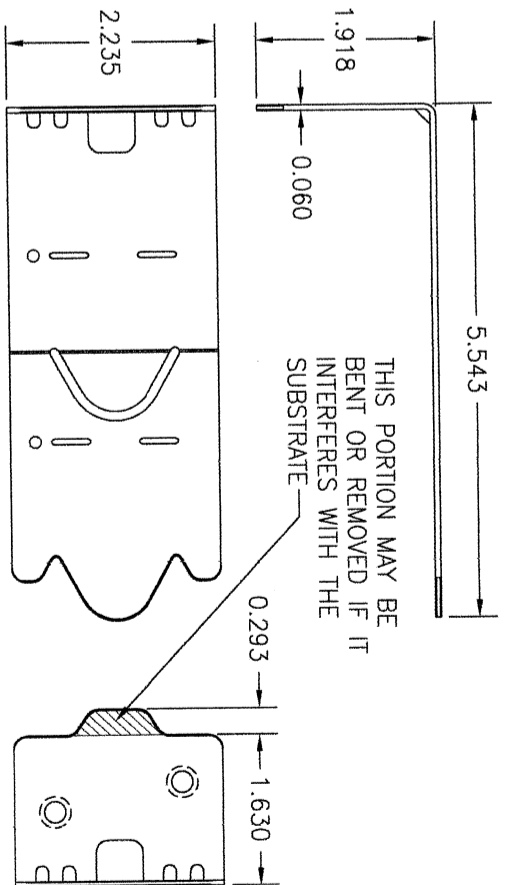
(5) **FRAME INSTALLATION CLIP**
(50 KSI STEEL)
ADJUSTABLE CLIP USED WITH 3-PIECE CLIP SYSTEM



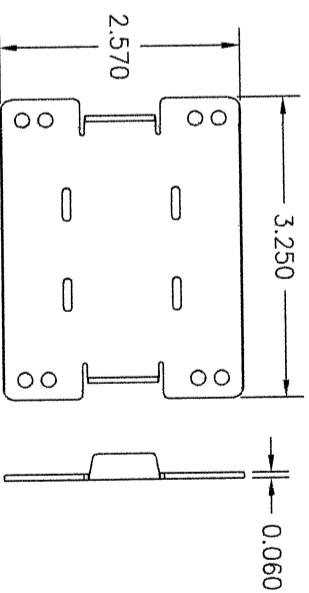
(3) **FRAME INSTALLATION CLIP**
(50 KSI STEEL)
SHORT CLIP USED WITH 3-PIECE CLIP SYSTEM (TYPICALLY USED WITH 2X4 BUCK SUBSTRATE)



(6) **3-PIECE CLIP RECEIVER**
(50 KSI STEEL)



(4) **FRAME INSTALLATION CLIP**
(50 KSI STEEL)
LONG CLIP USED WITH 3-PIECE CLIP SYSTEM (TYPICALLY USED WITH 2X6 BUCK SUBSTRATE, BUT MAY ALSO BE USED WITH 2X4)



(7) **3-PIECE CLIP BASE**
(33 KSI STEEL)

NO.	REVISION DESCRIPTION	BY	DATE
1			
2			

DRAWING TITLE: PELLA ARCHITECT NON-IMPACT ALUMINUM CLAD IN-SWING DOOR INSTALLATIONS

CONSULTANTS: W. W. SCHAEFER ENGINEERING & CONSULTING, P.A. (CA 6809)
7480 150TH COURT NORTH
PALM BEACH GARDENS, FL 33418
PHONE: 561-744-3424

MANUFACTURER:



PELLA CORPORATION
102 MAIN STREET
PELLA, IA 50219
641-621-1000

CERTIFICATION

WARREN W. SCHAEFER, P.E.
P.E. NO. 44135

DRAWING NO. 1724
REV. D
SHEET NO. 9 OF 9

DRAWN BY: W.M.S.
CHECKED BY: W.M.S.
DATE: 11/24/10